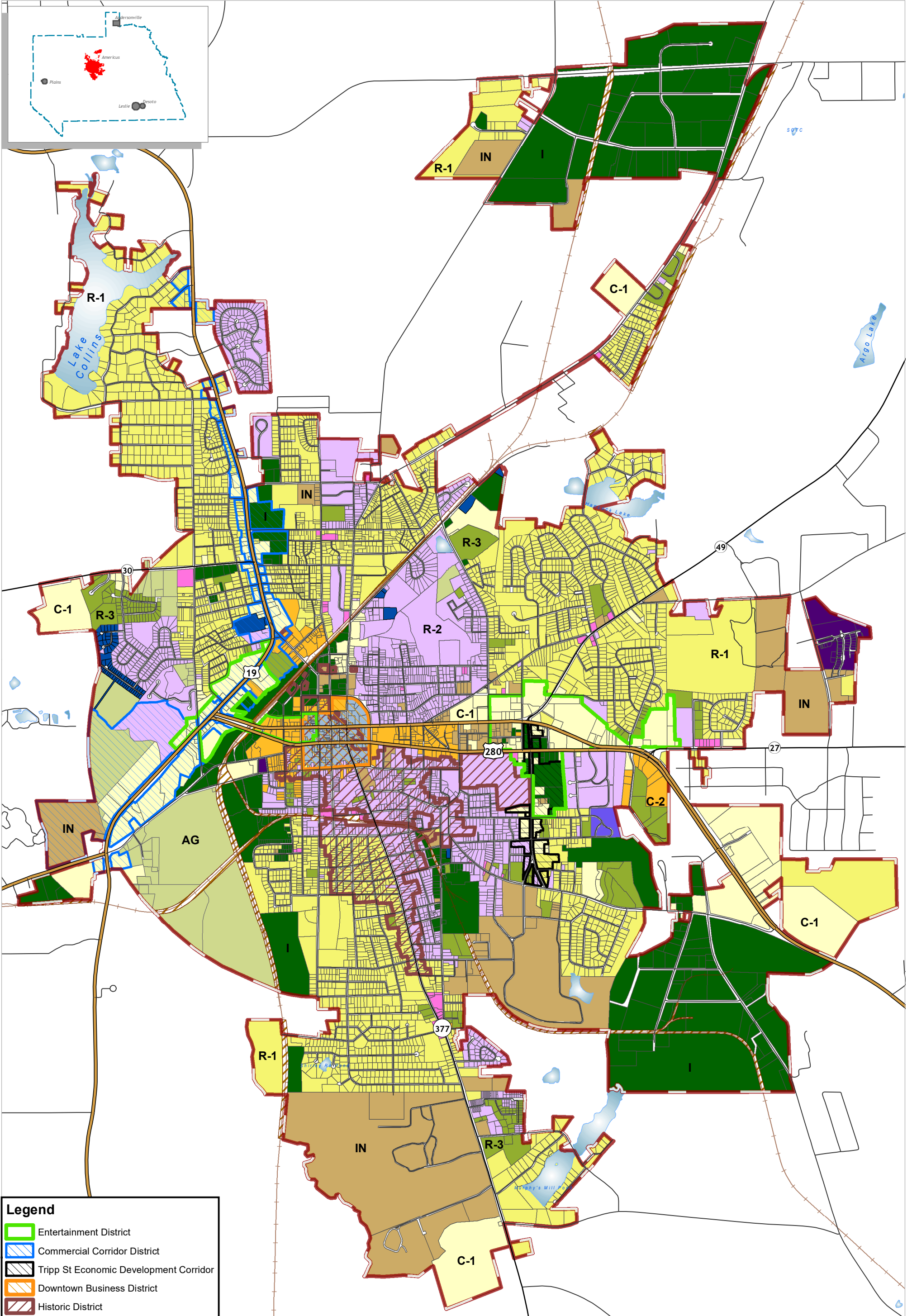
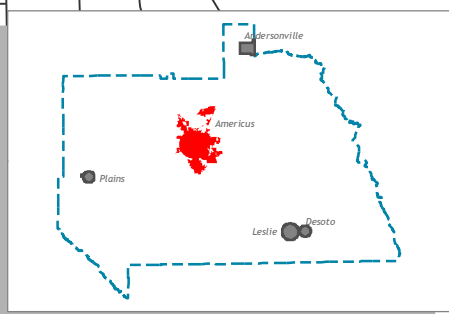




Official Zoning Map City of Americus, GA



Rev. 7/25/2023



Legend

- Entertainment District
- Commercial Corridor District
- Tripp St Economic Development Corridor
- Downtown Business District
- Historic District

AG (Agricultural)	I (Industrial)	R-2 (1 and 2 Family Dwelling)
C-1 (Roadside Business)	IN (Institutional)	R-3 (Multi Family Residential High Density)
C-2 (General Business)	N-S (Neighborhood Shopping)	R-3A (Multi Family Residential Middle Density)
C-3 (Downtown General Business)	PMUD (Planned Mixed Use)	R4MH (Residential Mobile Home)
	R-1 (Single Family Residential)	RR (Railroad ROW)



Mapping Americus and Sumter County
 103 W. Canal Street, 2nd Floor, City Hall, Room 205
 Americus, GA 30513
 Beverly Butcher, GIS Coordinator
 bbutcher@americusga.gov
 Website: <http://www.americusga.gov>
 Email: bbutcher@americusga.gov

Data Disclaimer: The data represented on this maps has been compiled by various agencies and departments both internal and external to Americus and Sumter County's Geographic Information System (GIS). The GIS data used in this map is for informational purposes only and may not be suitable for legal, engineering or surveying purposes. Americus and Sumter County assumes no responsibility for any work done by using this map. Questions or concerns contact Beverly Butcher (229) 924-4411 Ext. 241